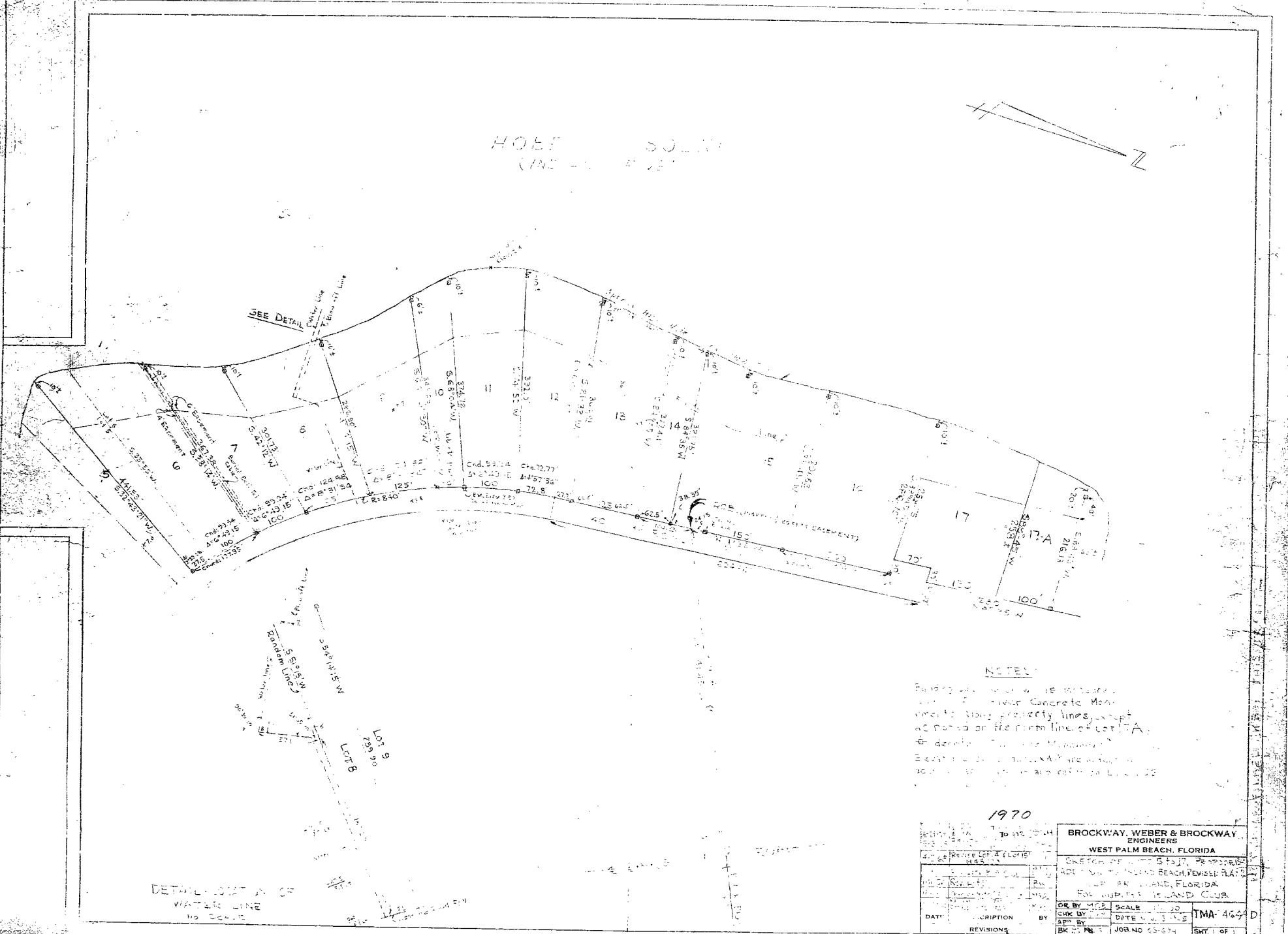


HOFF SOUTH  
(INCORPORATED)



DETAIL OF WATER LINE  
NO. 10000

NOTES

Buildings are to be constructed of concrete masonry blocks with concrete masonry walls to show property lines, except as noted on the plan line of lot 17A.  
 - details of the masonry  
 - details of the masonry  
 - details of the masonry

1970

BROCKWAY, WEBER & BROCKWAY, ENGINEERS WEST PALM BEACH, FLORIDA	
SECTION OF LOTS 10 TO 17, 1970 HOFF SOUTH, WEST PALM BEACH, FLORIDA	
FOR THE PALM BEACH ISLAND CLUB	
DATE	DESCRIPTION
BY	BY
REVISIONS	REVISIONS
SCALE: 1" = 20'	TMA-4644 D
JOB NO. 25-674	SHEET 1 OF 1

16:1